



IgG1 rabbit pAb

NB-66-10727-50 $\mu$ L

## IgG1 rabbit pAb

Cat No.:NB-66-10727-50 $\mu$ L

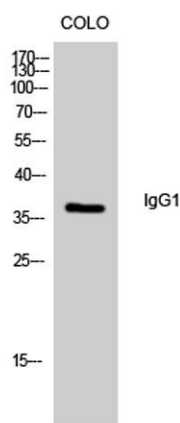
For research use only

### Overview

---

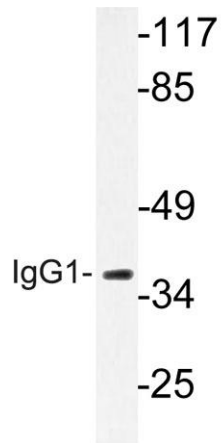
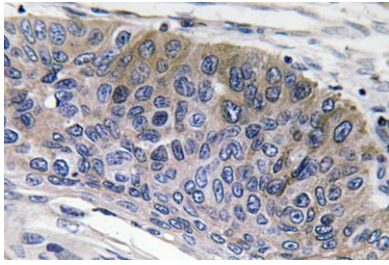
<b>Product Name</b>	IgG1 rabbit pAb
<b>Host species</b>	Rabbit
<b>Applications</b>	WB;IHC;IF;ELISA
<b>Species Cross-Reactivity</b>	Human;Rat;Mouse;
<b>Recommended dilutions</b>	Western Blot: 1/500 - 1/2000. Immunohistochemistry: 1/100 - 1/300. ELISA: 1/40000. Not yet tested in other applications.
<b>Immunogen</b>	The antiserum was produced against synthesized peptide derived from human IgG1. AA range:196-245
<b>Specificity</b>	IgG1 Polyclonal Antibody detects endogenous levels of IgG1 protein.
<b>Formulation</b>	Liquid in PBS containing 50% glycerol, 0.5% BSA and 0.02% sodium azide.
<b>Storage</b>	Store at -20°C. Avoid repeated freeze-thaw cycles.
<b>Protein Name</b>	Ig gamma-1 chain C region
<b>Gene Name</b>	IGHG1
<b>Cellular localization</b>	Secreted . Cell membrane .
<b>Purification</b>	The antibody was affinity-purified from rabbit antiserum by affinity-chromatography using epitope-specific immunogen.
<b>Clonality</b>	Polyclonal
<b>Concentration</b>	1 mg/ml
<b>Observed band</b>	41kD
<b>Human Gene ID</b>	3500
<b>Human Swiss-Prot Number</b>	P01857
<b>Alternative Names</b>	IGHG1; Ig gamma-1 chain C region
<b>Background</b>	disease:Chromosomal aberrations involving IGHG1 may be a cause of multiple myeloma [MIM:254500]. Translocation t(11;14)(q13;q32) with CCND1; translocation t(4;14)(p16.3;q32.3) with FGFR3; translocation t(6;14)(p25;q32) with IRF4.,miscellaneous:Disease protein OMM may

represent an allelic form or another gamma chain subclass.,miscellaneous:Disease protein WIS is lacking most of the V region and all of the CH1 region.,miscellaneous:Disease protein ZUC lack most of the V region, all of the CH1 region, and part of the hinge compared with normal gamma-3 heavy chains.,miscellaneous:EU also differs in the amidation states of residues 155, 166, 177, 195, 198, 269, and 272 and in the order of residues 268-272.,miscellaneous:KOL also differs in the amidation states of residues 198, 267 and 272.,miscellaneous:Nie also differs in the amidation states of 35, 116, 198, 269 and 272.,miscellaneous:Nie has the G1M(17) allotypic marker, 97-K, and the G1M(1) markers, 239-D and 241-L. KOL and EU sequences have the G1M(3) marker and the G1M (non-1) markers.,miscellaneous:The hinge region in gamma-3 chains is about four times as long as in other gamma chains and contains three identical 15-residue segments preceded by a similar 17-residue segment (12-28).,online information:IGHM mutation db,polymorphism:All 4 combinations of the S/G and V/G polymorphisms at positions 191 and 216 have been observed in human mu chains.,subcellular location:During differentiation, B-lymphocytes switch from expression of membrane-bound IgM to secretion of IgM.,subunit:Dimer linked by 12 disulfide bonds; it has an extra interchain disulfide bond at position 7 in addition to the 11 normally present in the hinge region.,



Western Blot analysis of colo cells using IgG1 Polyclonal Antibody diluted at 1:500

Immunohistochemistry analysis of IgG1 antibody in paraffin-embedded human lung carcinoma tissue.



Western blot analysis of lysate from LOVO cells, using IgG1 antibody.