

Product Description: BRS-3 antibody, human, C-term.
Bombesin-like receptor 3
Bombesin receptor
G Protein-coupled receptor
Polyclonal antibody raised against the
C-terminus of the human BRS-3 receptor

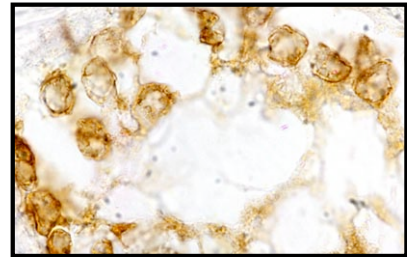
Product-No.: S5-9015-S-R

Immunogen: residues 342-361 coupled to KLH (NP_001718)
KLH-seisvtsftgcsvkqaedrf

Host: Rabbit

Form: serum with 0.02% NaN₃ as preservative

Quantity: 50 µl



BRS-3 immunoreactivity in human pancreatic carcinoma.

Applications: ICH (p), IC, W
W = Western blot (1:5000)
IC = Immunocytochemistry (1:5000)
ICH (p) = Immunohistochemistry of formalin-fixed, paraffin-embedded tissues (1:2500)

Species cross-reactivity: human

Sensitivity: 50 ng

Storage: 4 °C short term
-20 °C long term

