

Product Description: GRPR antibody, human, C-term.
Gastrin Releasing Peptide Receptor
Bombesin Receptor,
G Protein-coupled Receptor
Polyclonal antibody raised against the
C-terminus of the human GRPR receptor

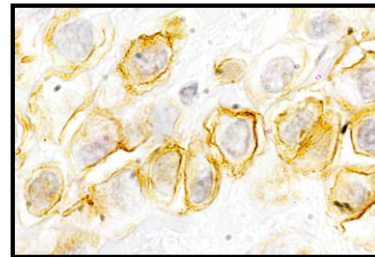
Product-No.: S3-9009-S-R

Immunogen: residues 342-361 coupled to KLH (NP_005305)
KLH-npsvatfslingnicheryv

Host: Rabbit

Form: serum with 0.02% NaN₃ as preservative

Quantity: 50 µl



GRPR immunoreactivity in human breast cancer.

Applications: ICH (p), IC, W
W = Western blot (1:5000)
IC = Immunocytochemistry (1:5000)
ICH (p) = Immunohistochemistry of formalin-fixed, paraffin-embedded tissues (1:2500)

Species cross-reactivity: human

Sensitivity: 50 ng

Storage: 4 °C short term
-20 °C long term

