

NeoPRO ECL substrates

#Cat: NB-78-00007 Size:250mL kit
#Cat: NB-78-00008 Size:250mL kit
#Cat: NB-78-00009 Size:125mL kit

One-Solution ECL Substrates for Western Blotting

NeoPRO line includes three products with different levels of sensitivity, from picograms to low femtograms, covering all detection needs.

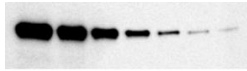
NeoPRO pre-mixed solutions, based on proprietary technology, provide convenience, increased consistency in your results, avoiding pipetting errors and possible contaminations.

NeoPRO substrates storage is at Room Temperature (RT).

Product	When to use
NeoPRO RTU Nano - Ready to Use Western ECL Substrate Cod. NB-78-00007	Mid-picogram detection
NeoPRO RTU Pico - Ready to Use Western ECL Substrate Cod. NB-78-00008	Mid-femtogram detection
NeoPRO RTU Femto - Ready to Use Western ECL Substrate Cod. NB-78-00009	Low-femtogram detection

NeoPRO RTU Nano - Ready to Use Western ECL Substrate

Our entry level pre-mixed substrate for mid-picogram detection level.



NeoPRO RTU Nano

Western blotting detection of HDAC-1 on HeLa cell lysate with NeoPRO RTU Nano.

Sample: Two-fold dilution series of HeLa whole cell lysate (abcam®) from 5 µg to 0.078 µg of total protein

Primary antibody: Rabbit-anti Human HDAC-1 (abcam®) 1:2000

Secondary antibody: Goat anti-rabbit IgG HRP (2mg/mL) (abcam®) 1:20000

Imaging: Chemiluminescence imager

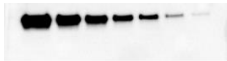
Exposure time: 120 seconds

NeoPRO RTU Pico - Ready to Use Western ECL Substrate

Versatile pre-mixed substrate for mid-femtogram detection level.

Less optimization required.

High sensitivity combined with a broad linear dynamic range for an accurate quantification of both low and high abundance proteins in the same experiment.



NeoPRO RTU Pico

Western blotting detection of HDAC-1 on HeLa cell lysate with NeoPRO RTU Pico.

Sample: Two-fold dilution series of HeLa whole cell lysate (abcam®) from 5 µg to 0.078 µg of total protein

Primary antibody: Rabbit-anti Human HDAC-1 (abcam®) 1:5000

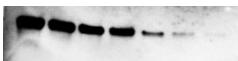
Secondary antibody: Goat anti-rabbit IgG HRP (2mg/mL) (abcam®) 1:75000

Imaging: Chemiluminescence imager

Exposure time: 120 seconds

NeoPRO RTU Femto - Ready to Use Western ECL Substrate

The most sensitive chemiluminescent single ECL substrate available to date for low-femtogram detection level. Excellent signal intensity to detect very low amounts of proteins reducing the needed quantity of antibodies.



NeoPRO RTU Femto

Western blotting detection of HDAC-1 on HeLa cell lysate with NeoPRO RTU Femto.

Sample: Two-fold dilution series of HeLa whole cell lysate (abcam®) from 2,5 µg to 0.039 µg of total protein

Primary antibody: Rabbit-anti Human HDAC-1 (abcam®) 1:10000

Secondary antibody: Goat anti-rabbit IgG HRP (2mg/mL) (abcam®) 1:200000

Imaging: Chemiluminescence imager

Exposure time: 120 seconds