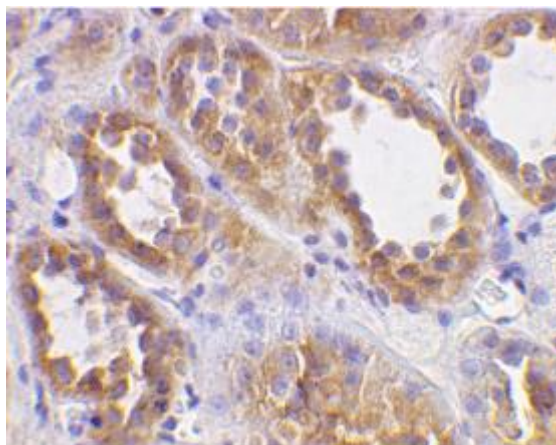


Rabbit anti Human ACE2 (N-Terminal)

Cat # NB-47-02108-100UG size: 100µg



Immunohistochemical staining of human kidney with Rabbit anti Human ACE2

Description

Rabbit anti Human ACE2 antibody recognizes human Angiotensin-converting enzyme 2, also known as ACE2, ACE-related carboxypeptidase or Metalloprotease MPROT15. ACE2 is a 788 amino acid ~100 kDa carboxypeptidase expressed in a range of tissues including heart, kidney, testis and the gastrointestinal system.

ACE2 is a homologue of ACE (Angiotensin-converting enzyme 1), although it has a distinct catalytic activity. ACE2 catalyzes the cleavage of active angiotensin II into angiotensin 1-7, which may counteract the effects of ACE by increasing vasodilatation.

ACE2 serves as the cellular entry point for the severe acute respiratory syndrome (SARS) virus, functioning as a receptor for the SARS Spike protein (Turner et al. 2004).

Product Information

Host:	Rabbit
Applications:	Immunohistology - Paraffin, WB
Reactivity:	Human
Clonality:	Polyclonal
Conjugation:	Unconjugated
Isotype:	IgG
Formulation:	PBS, 0.02% Sodium Azide.
Purification:	Antisera to human ACE2 were raised by repeated immunisations of rabbits with highly purified antigen. Purified IgG was prepared by affinity chromatography.
Concentration:	1 mg/mL
Dilution Range:	To be determined by the user. This product requires antigen retrieval using heat treatment prior to staining of paraffin sections.

Storage Instruction: This product is shipped at ambient temperature. It is recommended to aliquot and store at -20°C on receipt. When thawed, aliquot the sample as needed. Keep aliquots at 2-8°C for short term use (up to 4 weeks) and store the remaining aliquots at -20°C.

Avoid repeated freezing and thawing as this may denature the antibody. Storage in frost-free freezers is not recommended.

Target

Protein Name: Angiotensin I Converting Enzyme 2
Uniprot ID: Q9BYF1
Immunogen Region: N-Term
Immunogen: Synthetic peptide corresponding to a sequence within the amino terminus of human ACE2

For reference only

*For reference only
For Research Use Only. Not for Diagnostic or Therapeutic Use.*