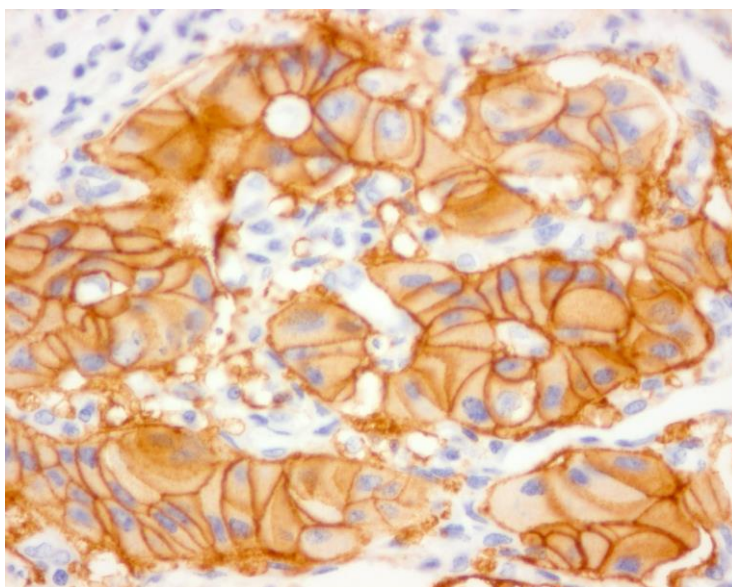


## Rabbit anti-Human Somatostatin Receptor 2A (SSTR2A)

Cat # NB-49-015-1ml size: 1ml

Cat # NB-49-015-500ul size: 500µl



SSTR2A immunoreactivity in a human neuroendocrine tumor.

### Description

Rabbit anti-Somatostatin Receptor 2A (SSTR2A), Human, Rat, Mouse

### Product Information

<b>Host:</b>	Rabbit
<b>Applications:</b>	IHC (p), IC, WB, IP
<b>Reactivity:</b>	Human, Rat, Mouse
<b>Clonality:</b>	Monoclonal
<b>Conjugation:</b>	Unconjugated
<b>Isotype:</b>	IgG
<b>Purification:</b>	affinity purified
<b>Dilution Range:</b>	Western blot (1:1000) Immunocytochemistry (1:500) Immunohistochemistry of formalin-fixed, paraffinembedded tissues (1:100)
<b>Storage Instruction:</b>	4°C (do not freeze)

## Target

---

- Immunogen:** Amino acid sequence 355-369 (ETQRTLLNGDLQTSI) of human, rat and mouse SSTR2A Receptor coupled to KLH
- Positive Control:** Human normal pancreatic islets
- Synonyms:** anti-human, rat, mouse SSTR2 antibody, somatostatin receptor 2 (SSTR2, sst2, SSTR2A, sst2A) rabbit antibody raised against the carboxy-terminus of the human, rat and mouse SSTR2 receptor.
- Localisation:** Cells and Surface Antigens

For reference only

***For reference only  
For Research Use Only. Not for Diagnostic or Therapeutic Use.***