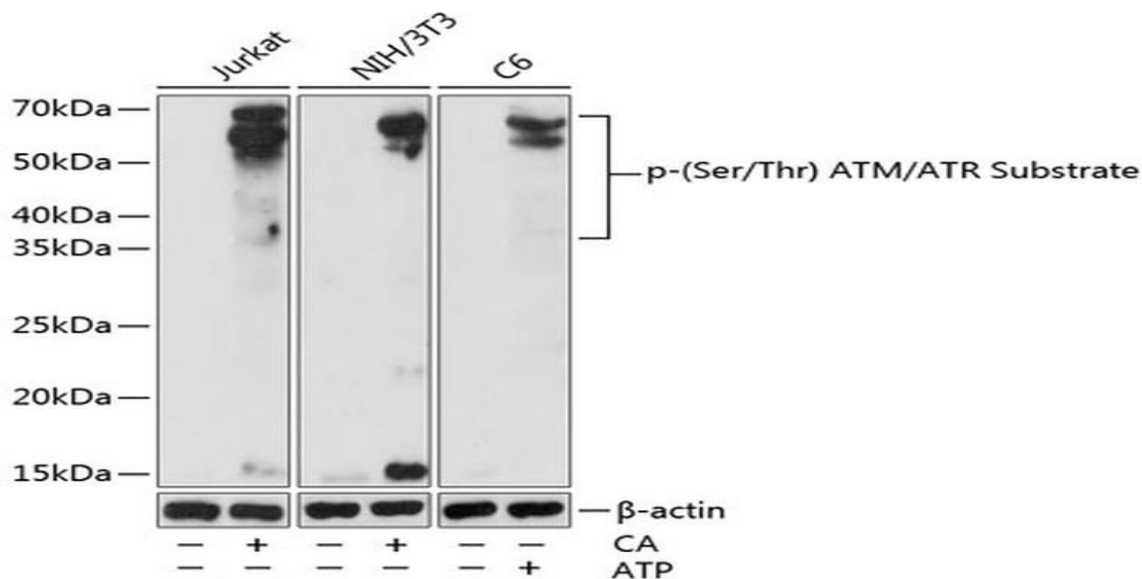


Anti-Pan-Phospho-Serine/Threonine antibody

#Cat: NB-22-47495-20 Size:20ul

#Cat: NB-22-47495-100 Size :100ul

#Cat: NB-22-47495-200 Size:200ul



Western blot analysis of extracts of various cell lines, using Pan Phospho-(Ser/Thr) ATM/ATR Substrate polyclonal antibody at 1:1000 dilution. Jurkat and NIH/3T3 cells were treated by Calyculin A (100 nM) at 37°C for 30 minutes after serum-starvation overnight. C6 cells were treated by ATP (5 mM) at 30°C for 1 hour. Secondary antibody: HRP Goat anti-rabbit IgG (H&L) at 1:10000 dilution. Lysates/proteins: 25 μ g per lane. Blocking buffer: 3% nonfat Dry Milk in TBST. Detection: ECL Basic Kit. Exposure time: 60s

Description

Rabbit polyclonal antibody anti-Pan-Phospho-Serine/Threonine

Product Information

Host: Rabbit
Applications: WB
Reactivity: All species
Clonality: Polyclonal
Conjugation: Unconjugated
Isotype: IgG
Formulation: PBS containing 0.02% Sodium Azide, 50% Glycerol, pH7.3.
Purification: Affinity purification
Dilution Range: WB 1:500-1:2000
Storage Instruction: Store in a freezer at -20°C and avoid freeze-thaw cycles.

Target

Immunogen: A phospho specific peptide corresponding to residues surrounding Ser/Thr of ATM/ATR Substrate.

For reference only

For Research Use Only. Not for Diagnostic or Therapeutic Use.