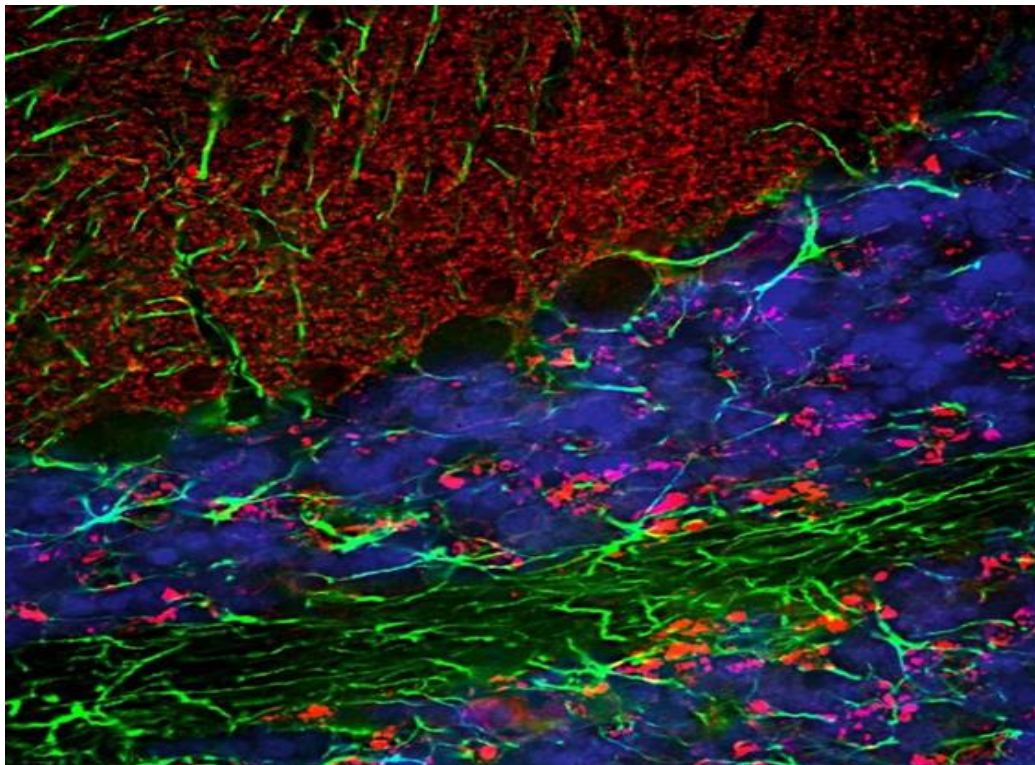


Chicken Anti-alpha Synuclein Polyclonal Antibody

#Cat: NB-26-01987 size: 100µl

α -synuclein is a member of the synuclein protein family, the other two members being β and γ synuclein, each protein being coded for by a distinct but related gene. α -synuclein was originally isolated as a major synaptic vesicle associated protein from the electric organ of the fish Torpedo, and direct homologues of α -synuclein are found in all vertebrates. Later work connected α -synuclein expression with several human brain pathologies, so that it is a major component of the Lewy bodies of Parkinson's disease. Point mutations of α -synuclein proved to be causative of some forms of familial Parkinson's disease. α -synuclein is also found in the Lewy bodies of patients with diffuse Lewy body disease and inclusions in glial cells in the brains of patients with multiple system atrophy and amyotrophic lateral sclerosis. α -synuclein is normally heavily expressed in brain and appears to be localized primarily to presynaptic regions, though not with a typical synaptic vesicle distribution pattern.

This antibody recognizes full length human and rodent α -synuclein specifically both in western blots and in immunocytochemical experiments and is a good marker of synapses on transgenic mice.



Immunofluorescent analysis of a section of rat cerebellum stained with chicken pAb to α -synuclein, 1:3,000 in red, and contained with rabbit pAb to GFAP in green. The blue is DAPI staining of nuclear DNA. Following transcranial perfusion of rat with 4% paraformaldehyde, brain was post fixed for 24 hours, cut to 45µM, and free-floating sections were stained with above antibodies

Product Information	
Host	Chicken
Applications	ICC, WB, IHC, IF
Reactivity	Human, Rat, Mouse, Cow, Pig, Horse
Clonality	Polyclonal IgY
Conjugation	Unconjugated
Formulation	Affinity purified antibody at 1mg/mL in 50% PBS, 50% glycerol plus 5mM NaN ₃
Dilution Range	Immunofluorescence: 1:1,000 Immunohistochemistry: 1:1,000 Western Blot: 1:2,000 Dilutions listed as a recommendation. Optimal dilution should be determined by investigator.
Storage Instruction	Antibody can also be aliquoted and stored frozen at -20° C in a manual defrost freezer for six months without detectable loss of activity. The antibody can be stored at 2° - 8° C for 1 month without detectable loss of activity. Avoid repeated freeze-thaw cycles.
Target	
ENTREZ	6622
UNIPROT	P37840RRID
Immunogen	Full length recombinant human protein expressed in and purified from E. coli