

Product Description: PAC1 antibody, human, C-term.
PACAP type 1 receptor
Pituitary adenylate cyclase activating
polypeptide type 1 receptor
G Protein-coupled receptor
Polyclonal antibody raised against the
C-terminus of the human PAC1 receptor

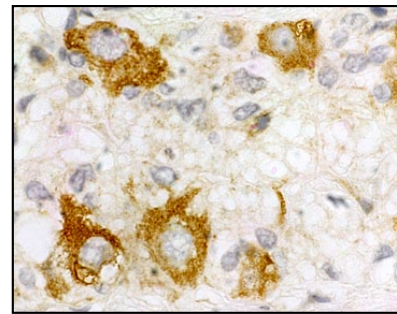
Product-No.: S9-9027-S-R

Immunogen: residues 506-525 coupled to KLH (BAA04466)
KLH- LSKSSSQIRMSGLPADNLAT

Host: Rabbit

Form: serum with 0.02% NaN₃ as preservative

Quantity: 50 µl



PAC1 receptor immunoreactivity in myenteric ganglia.

Applications: ICH (p), IC, W
W = Western blot (1:5000)
IC = Immunocytochemistry (1:5000)
ICH (p) = Immunohistochemistry of formalin-fixed, paraffin-
embedded tissues (1:2500)

Species cross-reactivity: human

Sensitivity: 50 ng

Storage: 4 °C short term
-20 °C long term

