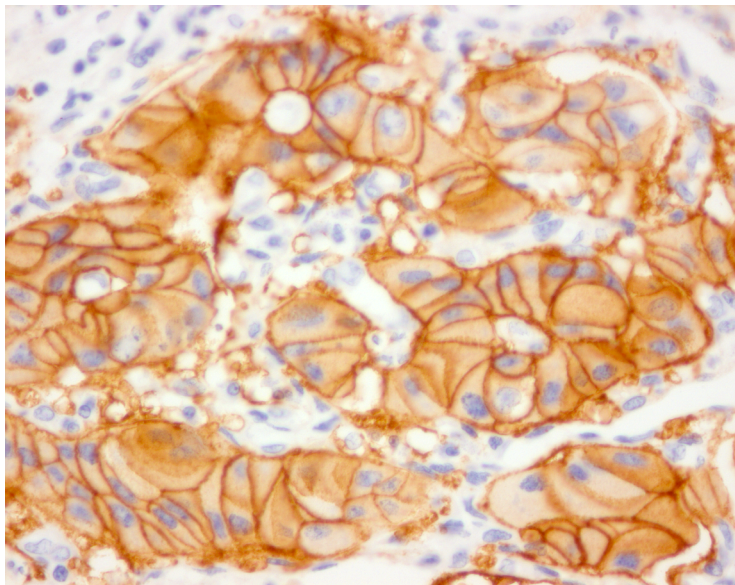


Product Description:	Somatostatin Receptor 2A (SSTR2A), Human, Rat, Mouse  anti-human, rat, mouse SSTR2 antibody, somatostatin receptor 2 (SSTR2, sst2, SSTR2A, sst2A) rabbit antibody raised against the carboxy-terminus of the human, rat and mouse SSTR2 receptor.
Category:	Cells and Surface Antigens
Order number:	SS-8000-RM
Host:	Rb
Description:	Rabbit IgG
Applications:	ICH (p), IC, WB, IP W = Western blot (1:1000) IC = Immunocytochemistry (1:500) IHC (p) = Immunohistochemistry of formalin-fixed, paraffin- embedded tissues (1:100)
Application:	IHC (p), IC, WB, IP
Reactivity:	Hu, Ms, Rt
Quantity:	1 ml
Immunogen:	Amino acid sequence 355-369 (ETQRTLLNGDLQTSI) of human, rat and mouse SSTR2A Receptor coupled to KLH
Storage:	4 °C (do not freeze)
Positive Control Tissue:	Human normal pancreatic islets



SSTR2A immunoreactivity in a human neuroendocrine tumor.