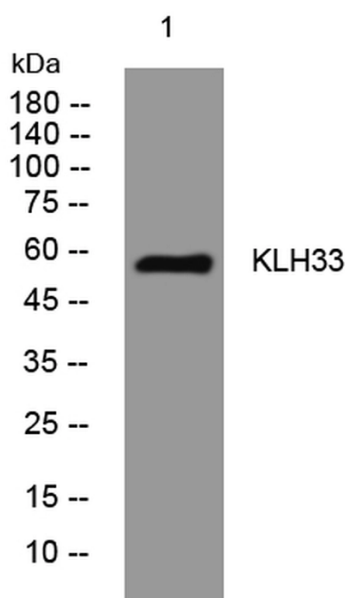


## Anti-KLHL33 antibody

Cat # NB-22-54651-50 size: 50µg

Cat # NB-22-54651-100 size: 100µg

Cat # NB-22-54651-200 size: 200µg



Western blot analysis of lysates from HeLa cells, primary antibody was diluted at 1:1000, 4°C over night

### Description

Rabbit polyclonal antibody anti-Kelch-Like Protein 33

### Product Information

<b>Host:</b>	Rabbit
<b>Applications:</b>	WB
<b>Reactivity:</b>	Human, Rat, Mouse
<b>Clonality:</b>	Polyclonal
<b>Conjugation:</b>	Unconjugated
<b>Isotype:</b>	IgG
<b>Formulation:</b>	PBS, 50% Glycerol, 0.5% BSA and 0.02% Sodium Azide.
<b>Purification:</b>	affinity-purified from rabbit anti-serum by affinity-chromatography
<b>Concentration:</b>	1 mg/mL
<b>Dilution Range:</b>	WB 1:500-2000
<b>Storage Instruction:</b>	Store at -20°C for up to 1 year from the date of receipt, and avoid repeat freeze-thaw cycles.

## Target

---

**Gene Symbol:** KLHL33  
**Gene ID:** 123103  
**Uniprot ID:** KLH33\_HUMAN  
**Immunogen:** Synthesized peptide derived from human KLH33  
**Specificity:** KLHL33 polyclonal antibody (Kelch-Like Protein 33) binds to endogenous Kelch-Like Protein 33  
**Protein Name:** Kelch-Like Protein 33  
**Alternative Names:** Anti-Kelch-Like Protein 33 antibody  
Anti-KLHL33 antibody

For reference only

*For reference only  
For Research Use Only. Not for Diagnostic or Therapeutic Use.*